



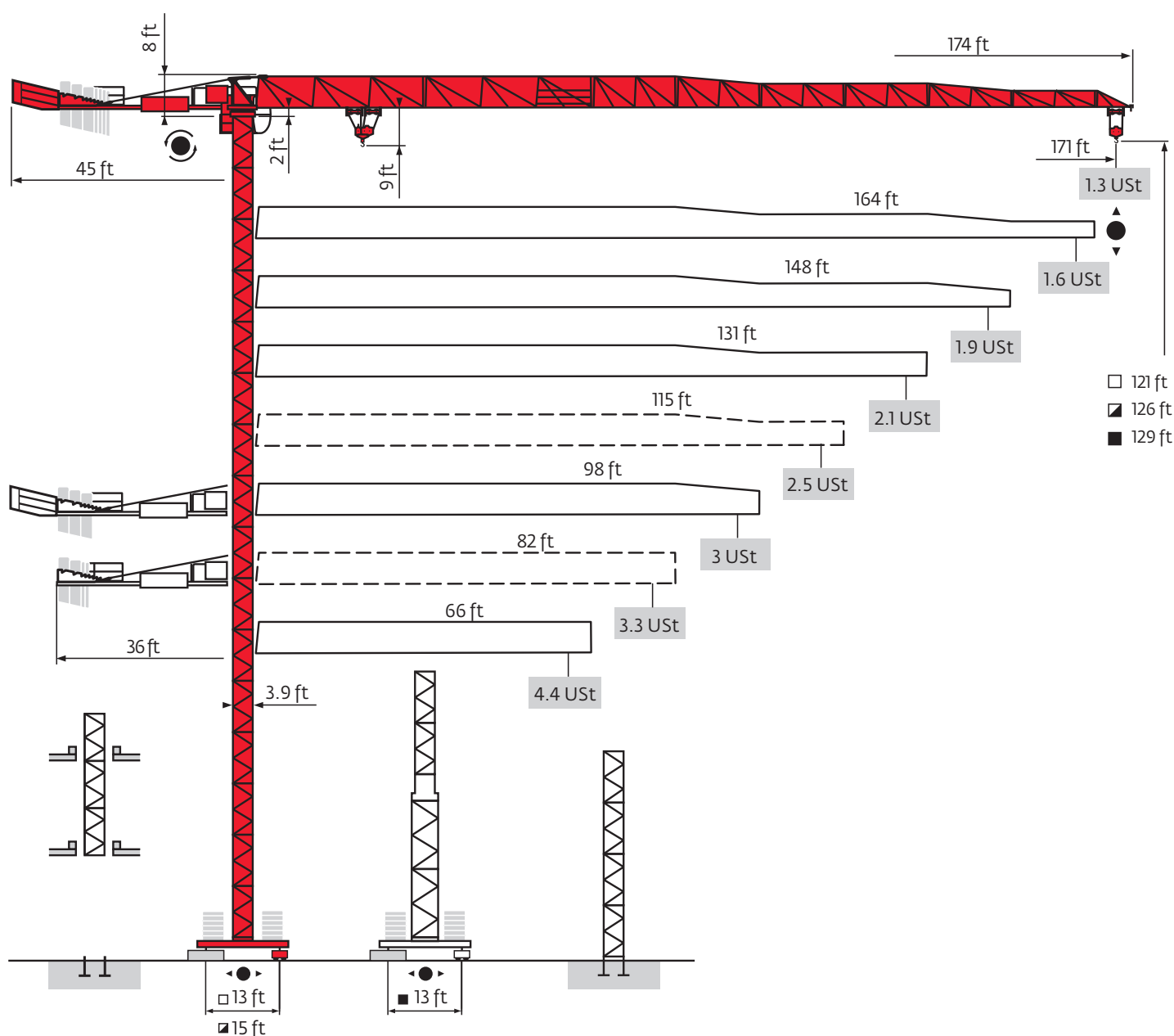
Grove Manitowoc National Crane Potain



Potain MCT 88

Data Sheet

FEM 1.001-A3



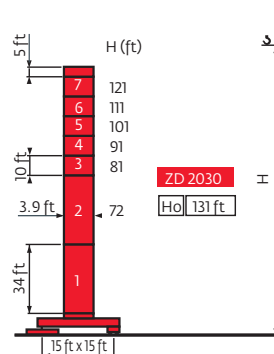
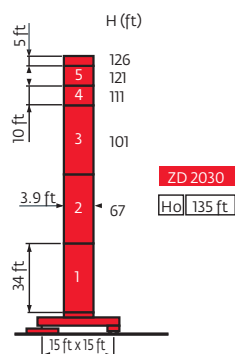
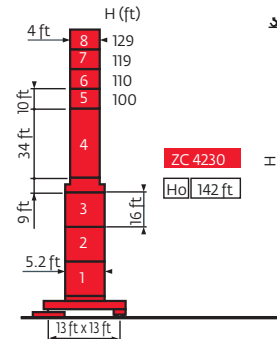
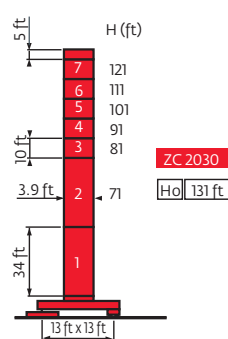
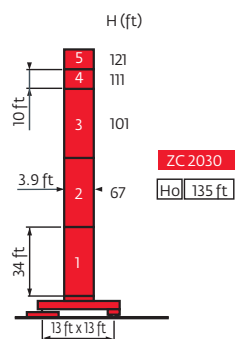
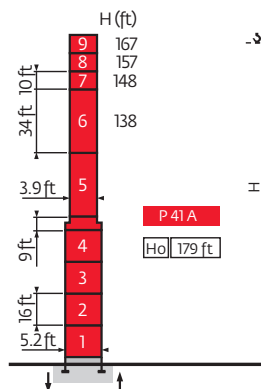
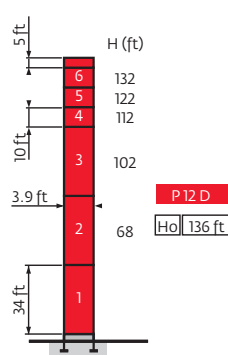
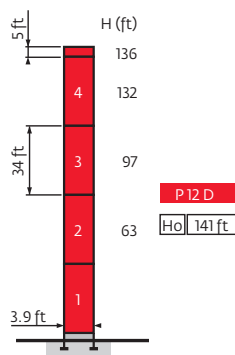
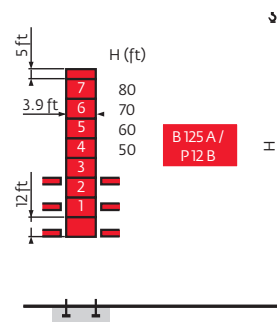
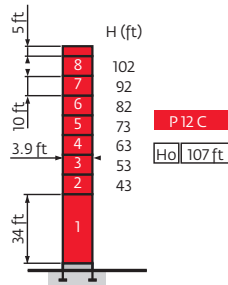
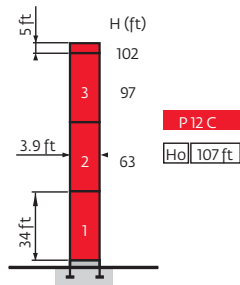
Values have been rounded



Mast

3.9 ft

66 ft → 171 ft



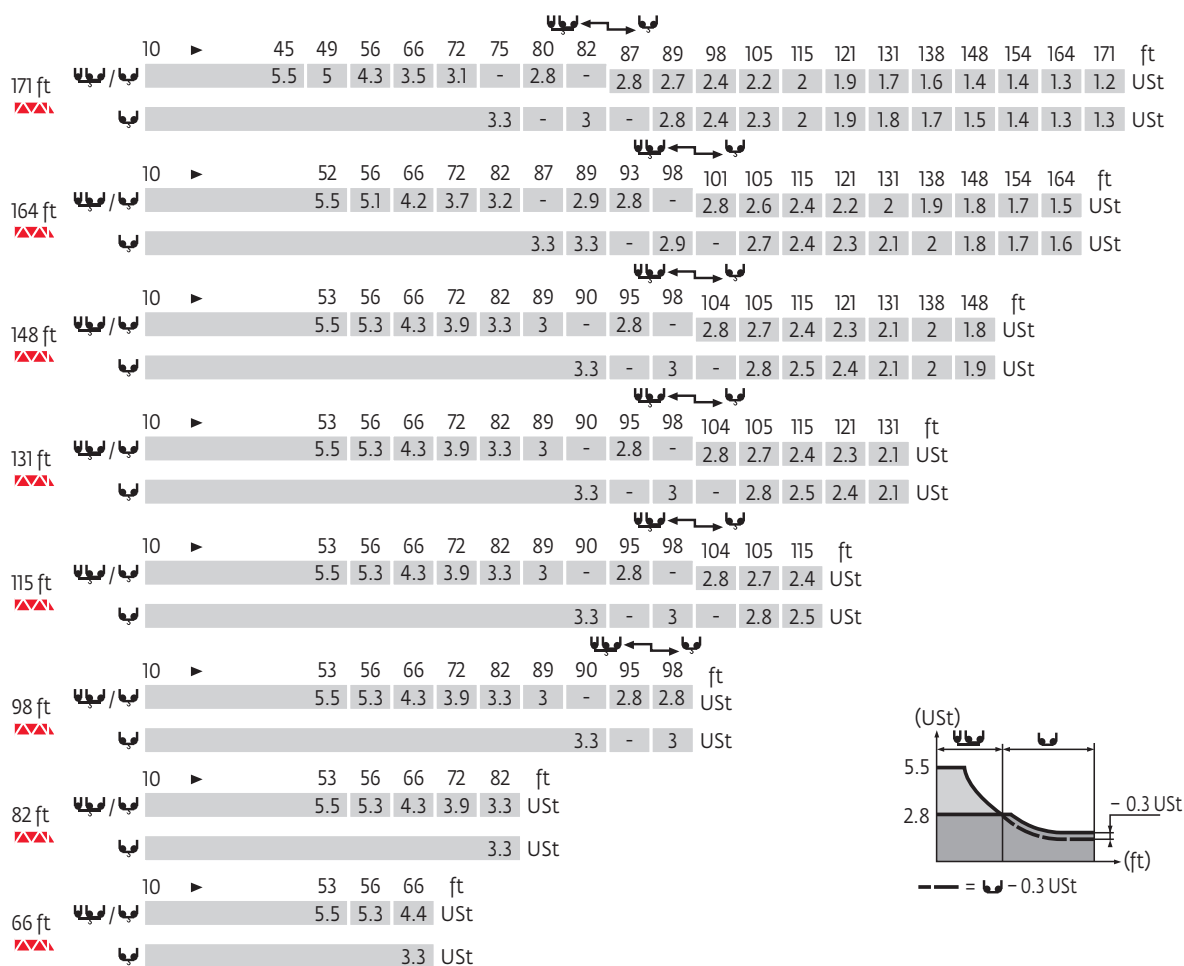
ZC 2030 - ZC 4230 - ZD 2030

- 2 $H2 = H + 1 \text{ ft}$
- 3 $H3 = H$
- 4 $H4 = H + 0.7 \text{ ft}$

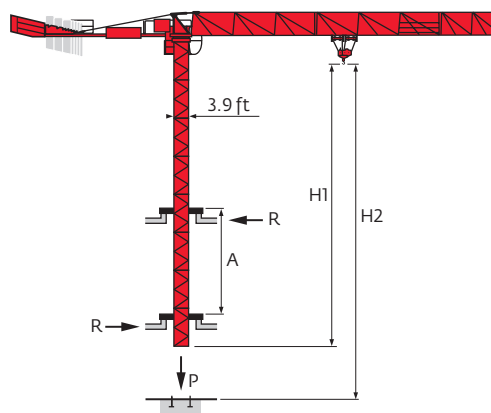
Ho H without cab
See climbing crane



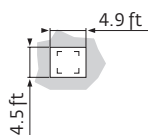
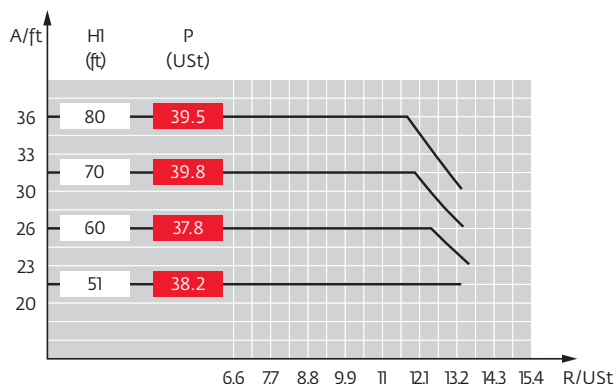
Load charts



Climbing crane



B 125 A



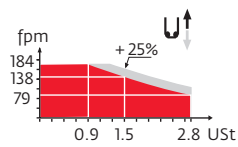
A Distance between collars
H1 Crane height
P Crane weight (in service)
R Horizontal reaction



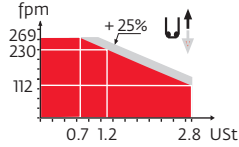
Mechanisms

| | | | | | | | | | | | | | | | | hp | kW | |
|------------------------|------------------|--------|---------------------------------|-----|-----|-----|-----|-----|-----|------------------------------|-----|-----|------------------------------------|---------|---------|----|---------|--|
| | 15 LVF 13 Optima | fpm | 9 → 25 → 79 → 138 → 184 | | | | | | | 5 → 12 → 40 → 69 → 92 | | | | | 15 | 11 | 656 ft | |
| | | USt | 2.8 | 2.8 | 2.8 | 1.5 | 0.9 | 5.5 | 5.5 | 5.5 | 3.1 | 1.8 | | | | | | |
| | 25 LVF 13 Optima | fpm | 13 → 36 → 112 → 184 → 230 → 269 | | | | | | | 7 → 20 → 56 → 92 → 115 → 135 | | | | | 25 | 18 | 1079 ft | |
| | | USt | 2.8 | 2.8 | 2.8 | 1.6 | 1.2 | 0.7 | 5.5 | 5.5 | 5.5 | 3.2 | 2.4 | 1.4 | | | | |
| | 15 LVF 15 Optima | fpm | 7.5 → 20 → 62 → 112 → 151 | | | | | | | | | | | | 15 | 11 | 522 ft | |
| | | USt | 3.3 | 3.3 | 3.3 | 1.9 | 1 | | | | | | | | | | | |
| | 25 LVF 15 Optima | fpm | 12 → 31 → 98 → 157 → 197 → 236 | | | | | | | | | | | | 25 | 18 | 748 ft | |
| | | USt | 3.3 | 3.3 | 3.3 | 1.9 | 1.4 | 0.8 | | | | | | | | | | |
| | RVF 61 Optima + | rpm | 0 → 0.8 | | | | | | | | | | | 7.5 | 5.5 | | | |
| | 4 DVF 3 | fpm | 0 → 207 | | | | | | | | | | | 5 | 3.7 | | | |
| ZC 2030 ZD 2030 | RT 224 | fpm | 98 | | | | | | | | | | | 2 x 4.8 | 2 x 3.5 | | | |
| ZC 4230 | RT 324 | fpm | 49 - 98 | | | | | | | | | | | 2 x 8.4 | 2 x 6.2 | | | |
| CEI 38 | | IEC 38 | | | | | | | | | | | kVA | | | | | |
| 480 V (+6% -10%) 60 Hz | | | | | | | | | | | | | 15 LVF : 25 kVA 25 LVF : 35 kVA | | | | | |

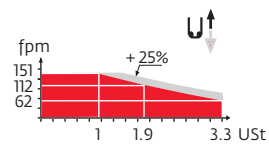
15 LVF 13 Optima



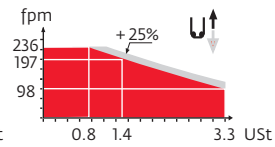
25 LVF 13 Optima



15 LVF 15 Optima



25 LVF 15 Optima



Hoisting



Traveling




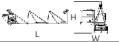
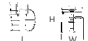
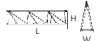
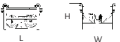
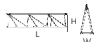

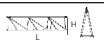
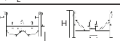
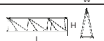

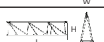

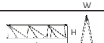

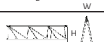
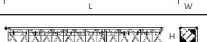
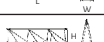
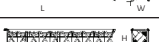
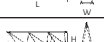
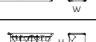
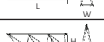
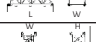
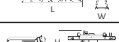
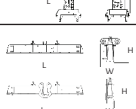


Slewing



Consult us



Component weights

| Description | | L x W x H (ft) | Weight (lb) | Description | | L x W x H (ft) | Weight (lb) |
|--|--|------------------|-------------|--------------------------------------|---|------------------|-------------|
| Counter-jib assembly transport position |  | 39 x 5.3 x 8.1 | 9369 | Jib foot (B3040) |  | 35.3 x 5.9 x 7.2 | 6217 |
| Cab V140L and support |  | 8.8 x 7.9 x 9.6 | 1911 | Jib section (H3046) |  | 33.5 x 2.6 x 6.4 | 2425 |
| SM trolley |  | 3.7 x 3.3 x 2.4 | 362 | Jib section (A3016) |  | 33.4 x 2.6 x 6.3 | 1636 |
| SM hookblock |  | 2.4 x 0.7 x 3.7 | 293 | Jib section (F3021) |  | 33.3 x 2.6 x 4.9 | 1248 |
| 2C trolley |  | 3.6 x 3.3 x 2.4 | 287 | Jib section (X3060) |  | 16.8 x 2.6 x 4.8 | 419 |
| 2C trolley |  | 3.7 x 3.3 x 2.4 | 254 | Jib section (H3127) |  | 16.7 x 2.6 x 3.3 | 381 |
| 2C hookblock |  | 3.6 x 0.7 x 4.5 | 511 | Jib section (U3115) |  | 6.7 x 2.6 x 3.3 | 132 |
| SR24E-2 |  | 35.1 x 4.2 x 4.2 | 4850 | Jib section (D3088) |  | 17 x 2.6 x 6.3 | 880 |
| SR26E-2 |  | 35.3 x 4.2 x 4.2 | 6338 | Jib section (P3098) |  | 16.9 x 2.6 x 6.2 | 710 |
| SR25F-2 |  | 25.4 x 4.3 x 4.3 | 4403 | Jib section (B3144) |  | 16.9 x 2.6 x 4.9 | 633 |
| S24A1-2 |  | 10.5 x 4.2 x 4.3 | 1572 | Jib section (N3097) |  | 16.8 x 2.6 x 4.9 | 624 |
| K40 / L20 |  | 9.7 x 6.9 x 6.8 | 1219 | Jib tip |  | 3.1 x 3.1 x 1.5 | 132 |
| Cross shaped base ZD 4230 (4,5 m) |  | 21.7 x 2.6 x 3.6 | 4034 | Counter-jib ballast CBQ (1000 kg) |  | 0.8 x 2.2 x 9 | 2205 |
| | | 21.7 x 1.6 x 4.3 | 4707 | Counter-jib ballast CBP (3000 kg) |  | 2.3 x 2.2 x 9.2 | 6614 |



Notes

Constant improvement and engineering progress make it necessary that we reserve the right to make specification, equipment and price changes without notice. Illustrations shown may include optional equipment and accessories, and may not include all standard equipment.



www.manitowoc.com

Regional Headquarters

Americas

Manitowoc, Wisconsin, USA
Tel: +1 920 684 6621
Fax: +1 920 683 6277

Shady Grove, Pennsylvania, USA
Tel: +1 717 597 8121
Fax: +1 717 597 4062

Europe, Middle East, Africa

Ecully, France
Tel: +33 472 18 2020
Fax: +33 472 18 2000

Asia – Pacific

Shanghai, China
Tel: +86 21 6457 0066
Fax: +86 21 6457 4955

Potain MCT 88
Code 09-003-.5M-0610